

MotionXtra N-Series

Compact High-G Highspeed Camera System



SnapShot

- Light sensitive CMOS sensors
- Optional Battery Pack available
- Shock resistant to 100G in all axes
- Flexible plug-ins (LabVIEW™, MATLAB®, Twain, SDK)
- N3 / 1280 x 1024 pixels at 1000 fps (2000 PLUS Mode)
- N4 / 1024 x 1024 pixels at 4000 fps (8000 PLUS Mode)
- N5 / 2352 x 1728 pixels at 500 fps (1000 PLUS Mode)
- Maximum 65'000 / 256'000 / 39'000 fps (N3 / N4 / N5)
- PC-Interface Gigabit Ethernet

Applications

- Product Development / Testing
- Research / Technical Education
- Machinery / Plant Construction
- Manufacturing / Packaging
- Biomechanics / Sports
- Advertising / Entertainment

Our Partner



MotionScope N3 / N4 / N5 – Specifications

	N3	N4	N5
Max. Frame Rate at Full Res.	1000 fps @ 1280 x 1024	4000 fps @ 1024 x 1024	500 fps @ 2352 x 1728
Max. Frame Rate at Reduced Res.	65,000 fps @ 1280 x 16	256,000 fps @ 1280 x 16	39,000 fps @ 2352 x 16
Array Size	1.3 megapixels	1.0 megapixels	4 megapixels
Pixel Size	12x12 µm	14x14 µm	7x7 µm
Sensitivity	3000 ASA Mono 1000 ASA Color	10,000 ASA Mono 5000 ASA Color	1000 ASA Mono 350 ASA Color
Memory Options	Internal and Configurable. Up to 1,600 frame storage	Internal and Configurable. Up to 2,000 frame storage	Internal and Configurable. Up to 500 frame storage
Trigger	TLL & Switch	TLL & Switch	TLL & Switch
Sync Input	Phase-lock TTL	Phase-lock TTL	Phase-lock TTL
IRIG	N/A	N/A	N/A
GPS Time Code	N/A	N/A	N/A
Sync Output	Frame sync / Strobe	Frame sync / Strobe	Frame sync / Strobe
HDMI	N/A	N/A	N/A
Comp Video	N/A	N/A	N/A
Camera Link	N/A	N/A	N/A
Ethernet	100/1000BaseT	100/1000BaseT	100/1000BaseT
USB 2.0	N/A	N/A	N/A
Shock /Vibration Rating	100G All axes	100G All axes	100G All axes
Battery Back-up	Up to 2 hours	Up to 2 hours	Up to 2 hours
MotionPro X	Mac or Windows	Mac or Windows	Mac or Windows
Motion Central	N/A	N/A	N/A
Plug-ins / MotionPro X	LabVIEW or MatLab	LabVIEW or MatLab	LabVIEW or MatLab
File Formats MotionPro X	TIF BMP AVI MRF MCF	TIF BMP AVI MRF MCF	TIF BMP AVI MRF MCF
File Formats Motion Central	Type-2 Bayer, TIFF, JPEG	Type-2 Bayer, TIFF, JPEG	Type-2 Bayer, TIFF, JPEG
Camera Size and Weight	60x60x75 mm, 0.48 kg	60x60x75 mm, 0.48 kg	60x60x75 mm, 0.48 kg

Options

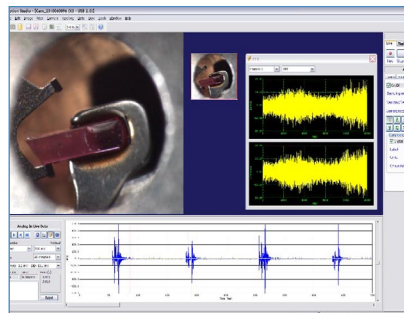
Sensor Data Acquisition	MotionPro™ DAS
Motion Analysis Software	ProAnalyst, WINalyze
Accessories	Highspeed Lenses, Lightings, Tripods, Carry bags and cases

Note: Specs are subject to change at any time. February 09

Accessories



Sensor Data Acquisition



Motion Analysis Software

